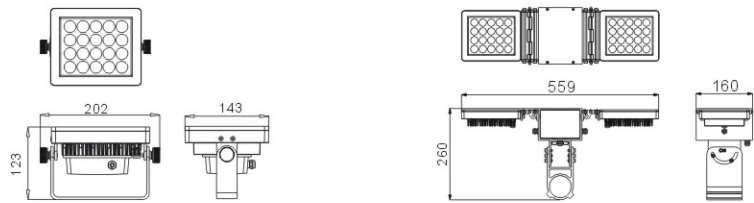


LED Advertisement Light

**1L/2L SERIES**

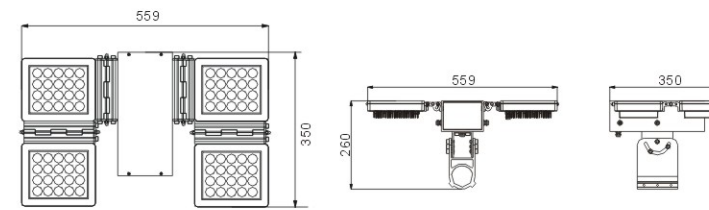
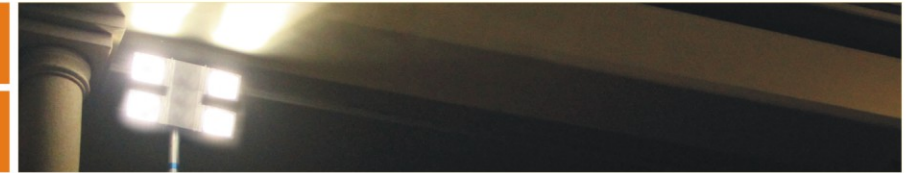


Model	ADL-1L-20P	ADL-2L-40P
Size	L202xW143xH123 mm	L559xW160xH260mm
Material	Die-cast Al.	Die-cast Al.
Weight	1.65kgs	5.6kgs
LED	20pcs (1 light module)	40pcs (1 light module)
Color	Warmwhite, White	Warmwhite, White
Input Volt	120V/240V AC	120V/240V AC
Power Consumption	28 Watts (Max.)	55 Watts (Max.)

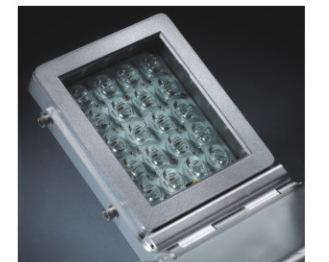
CE IP65 Asymmetrical 15° x 50° Asymmetrical 50° x 120° Asymmetrical 75° x 135°

LED Advertisement Light

**4L SERIES**



Model	ADL-4L-80P
Size	559x350x260 mm
Material	Die-cast body, aluminium
Weight	10.5kgs
LED	80pcs (4 light modules)
Color	Warmwhite, White
Input Volt	120V~240V AC
Power Consumption	85 Watts (Max.)



CE IP65 Asymmetrical 15° x 50° Asymmetrical 50° x 120° Asymmetrical 75° x 135°