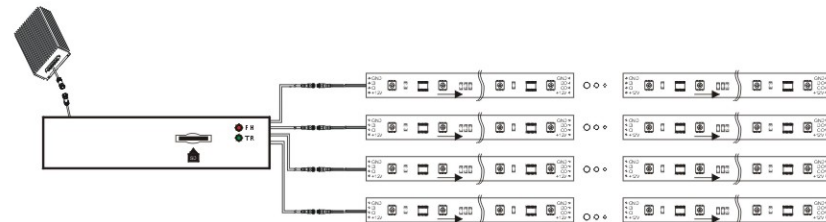


Controller-Video System

LIGHT MASTER



The below samples stipulated upon LED-SS-100-12V-VD & CVS-LM-4x512-12V



Model	CVS-LM-4X512
Size	L190 x W115 x H45mm
Weight	740g
Input Volt	120V/240V AC (12V DC optional)
Power	8W
Output Port	x4 connector (4pins)
Control Range	2048pixels
Gray Degree	256
Output Signal	RS232/RS485
Protection	IP20
Display	Offline mode
Software	LED Video

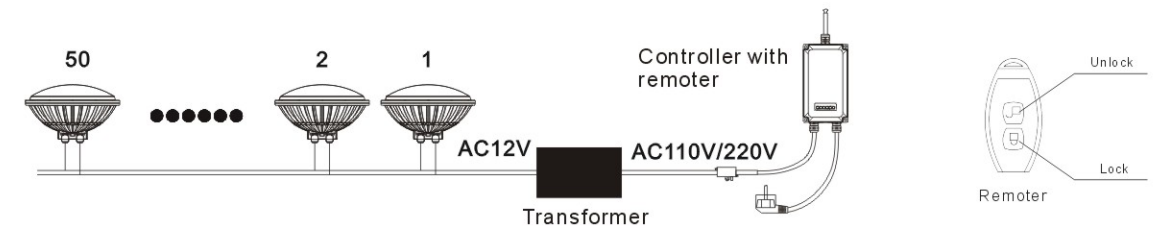
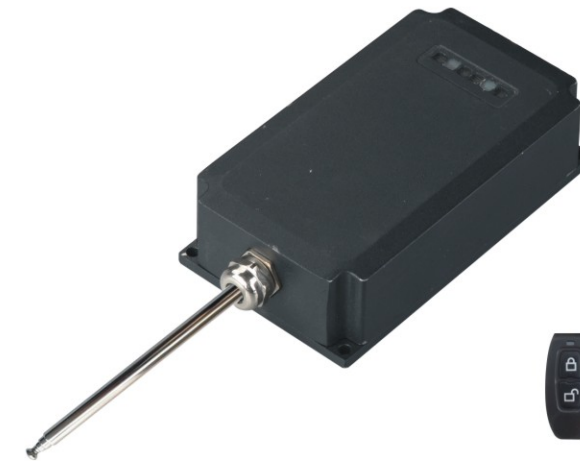
System Characters

- * Independent offline work mode
- * Versatile for all kinds of control chips of light fixture
- * Compatible with DMX 512 (1990) protocol
- * Photoelectric isolation between input and output
- * Available for various abnormal physical project
- * Synchronous work mode when switch on from the same power source
- * Parameters(brightness, clock, speed, circle) adjustable
- * EMC approval
- * Flexible software, video, flash, word...etc editable.



Controller

CTR-RM-SWITCH



Model	CTR-RM-SWITCH-240V
Size	L240 x W84 x H39.1mm
Material	aluminum alloy
Weight	0.65kgs
Input Volt	110V/220V AC
Output Power(max)	500/1000W

